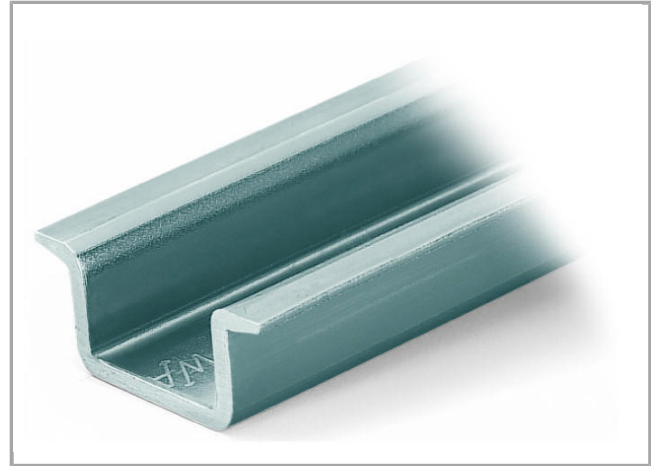
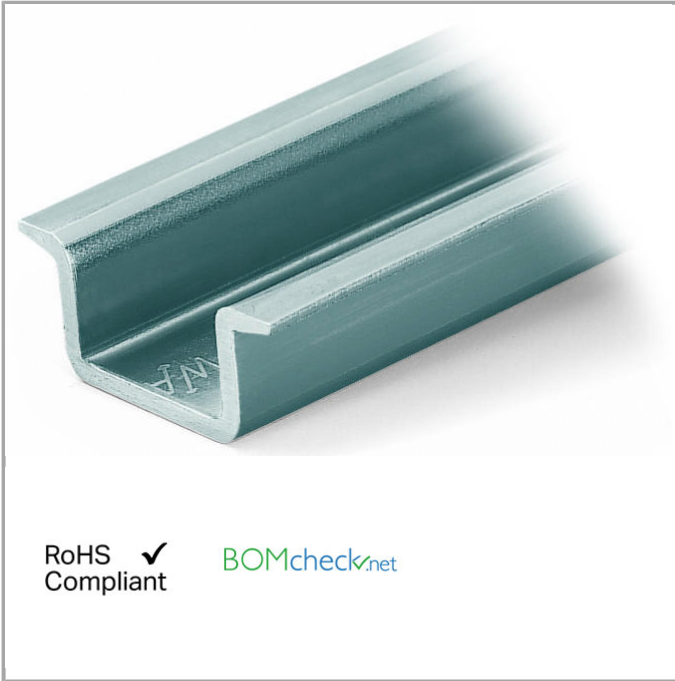


Data sheet | Item number: 210-118

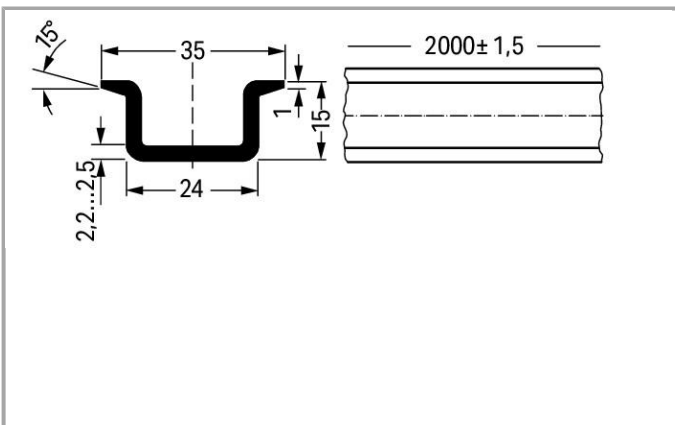
Steel carrier rail; 35 x 15 mm; 2.3 mm thick; 2 m long; unslotted; according to EN 60715



210-118



RoHS Compliant [BOMcheck.net](https://www.bomcheck.net)



Data

Technical Data

Main product function

Mounting Accessories

Geometrical Data

Abmessungen B x H x T (mm)

(2000 x 15 x 35) mm

Abmessungen B x H x T (inch)

(78.74 x 0.591 x 1.378) inch

Width

2,000 mm / 78.74 inch

Height

15 mm / 0.591 inch

Depth	35 mm / 1.378 inch
-------	--------------------

Material Data

Weight	1820 g
--------	--------

Commercial data

Product Group	2 (Terminal Block Accessories)
Country of origin	IT
GTIN	4017332277181
Customs Tariff No.	72169180000

Compatible products

Marking accessories



Item no.: 210-708
Labels; for TP printers

210-708



Item no.: 210-808
Labels; for Smart Printer

210-808

assembling



Item no.: 209-137
Mounting adapter; can be used as end plate; 6.5 mm wide

209-137



Item no.: 249-116
Screwless end stop; 6 mm wide; for DIN-rail 35 x 15 and 35 x 7.5

249-116



Item no.: 249-117
Screwless end stop; 10 mm wide; for DIN-rail 35 x 15 and 35 x 7.5

249-117



Item no.: 249-197
Screwless end stop; 14 mm wide; for DIN-rail 35 x 15 and 35 x 7.5

249-197

Downloads

Documentation

Bid Text

210-118	doc 24.1 kB	Download
---------	----------------	----------

CAD/CAE - Smart Data

CAD data

3D Download 210-118	URL	Download
---------------------	-----	----------



Subject to changes.
